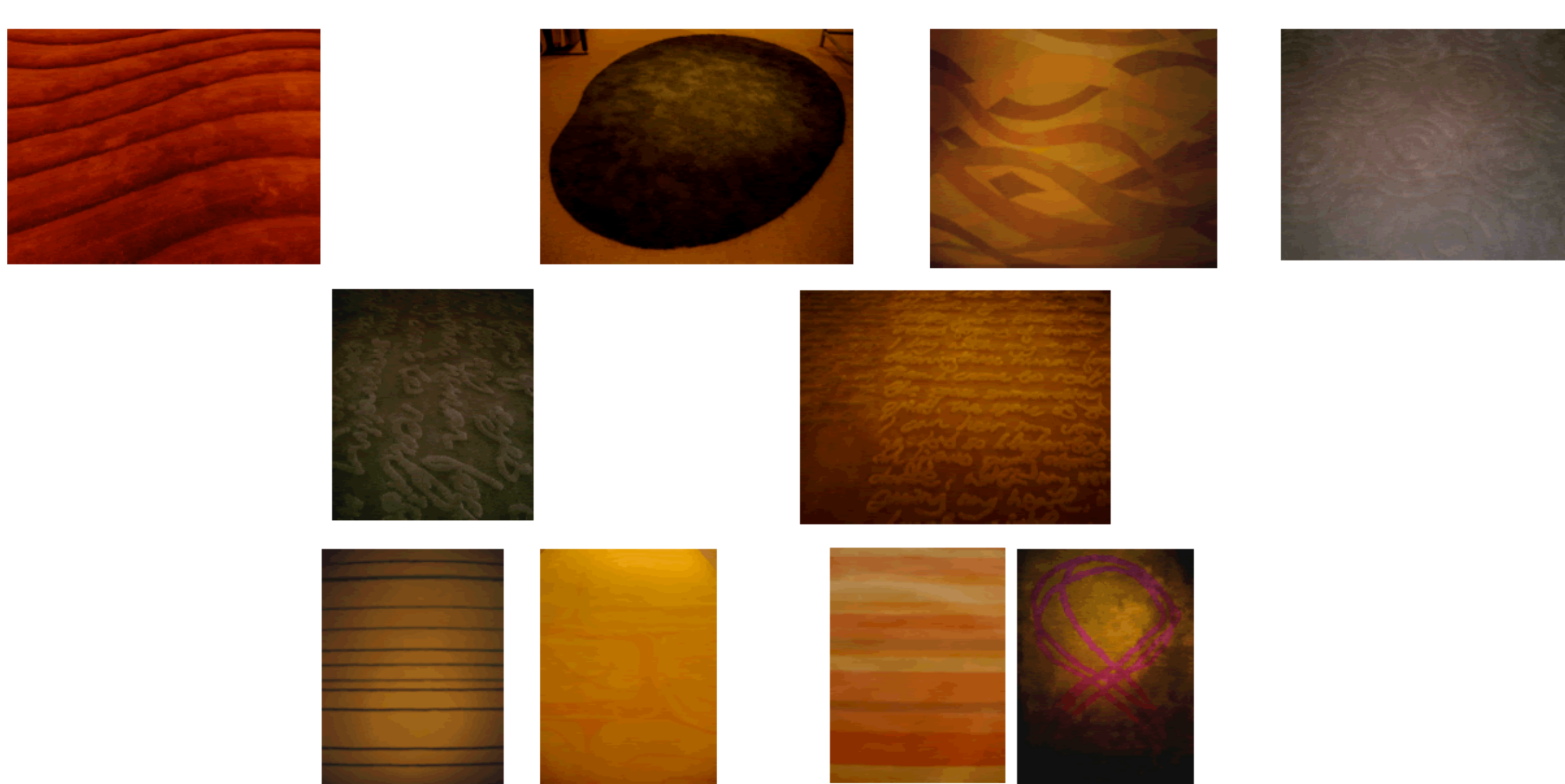


The studio's interest lies in the psychological and sociological aspects of design and the uncovering of fascinating cultural behavior. The images shown here represent a range of the collaborative works that have been produced since the studio's founding. The works vary in function and program, yet there is a similar set of concerns and visual language that is common to them all. Presented in this way the works reveal a pattern of form making and subconscious tactile memory that permeates the projects and defines our collaborative interactions with other personalities and disciplines.



ss&b (studio sputnik & baul) was co-founded by Larry Seow and Gwen Tan, as an interdisciplinary collaborative unit in 2003. The studio has published photography note cards, a series of bags for the display at the Reeds Space New York. They were the designers of ladies clothing labels 'larrygwen' and 'sketch' and have undertaken commissions to design numerous residential and commercial works. Completed projects include the Republic of Singapore Navy Tuas Maintenance Base, bridal and fashion spaces in Singapore's main shopping district and an upscale Chinese bookstore and exhibition space for the LaSalle College of the Arts.

interior design 2000

# keng tee seow

designer/ lecturer

singapore

